

Maratona Messier 2022

Observatório do Lago Alqueva

2 Abril



APAA
Associação
Portuguesa
de Astrónomos
Amadores

ALBIREO

The Messier Marathon is generally held during late **March / early April** when the Sun lies in a part of the zodiac devoid of Messier objects. In these dates **it is theoretical possible to see all the objects that Charles Messier listed**. One obvious problem is that the Moon is going to interfere with the night in question. The Moon is in a favourable position once every three years.

<http://www.astrosurf.com/re/messform.htm>



MESSIER OBJECT VISIBILITY

Use this form to check on the visibility of Messier objects from your location.
Programming by Bev Ewen Smith (COAA)

Enter the date and your location then press the OK button(s)

Date of evening when starting observing: year / month / day

Latitude of observer (North positive):

Longitude of observer (West positive):

ACCESSIBLE MESSIER OBJECTS

Programming by Bev Ewen Smith (COAA)

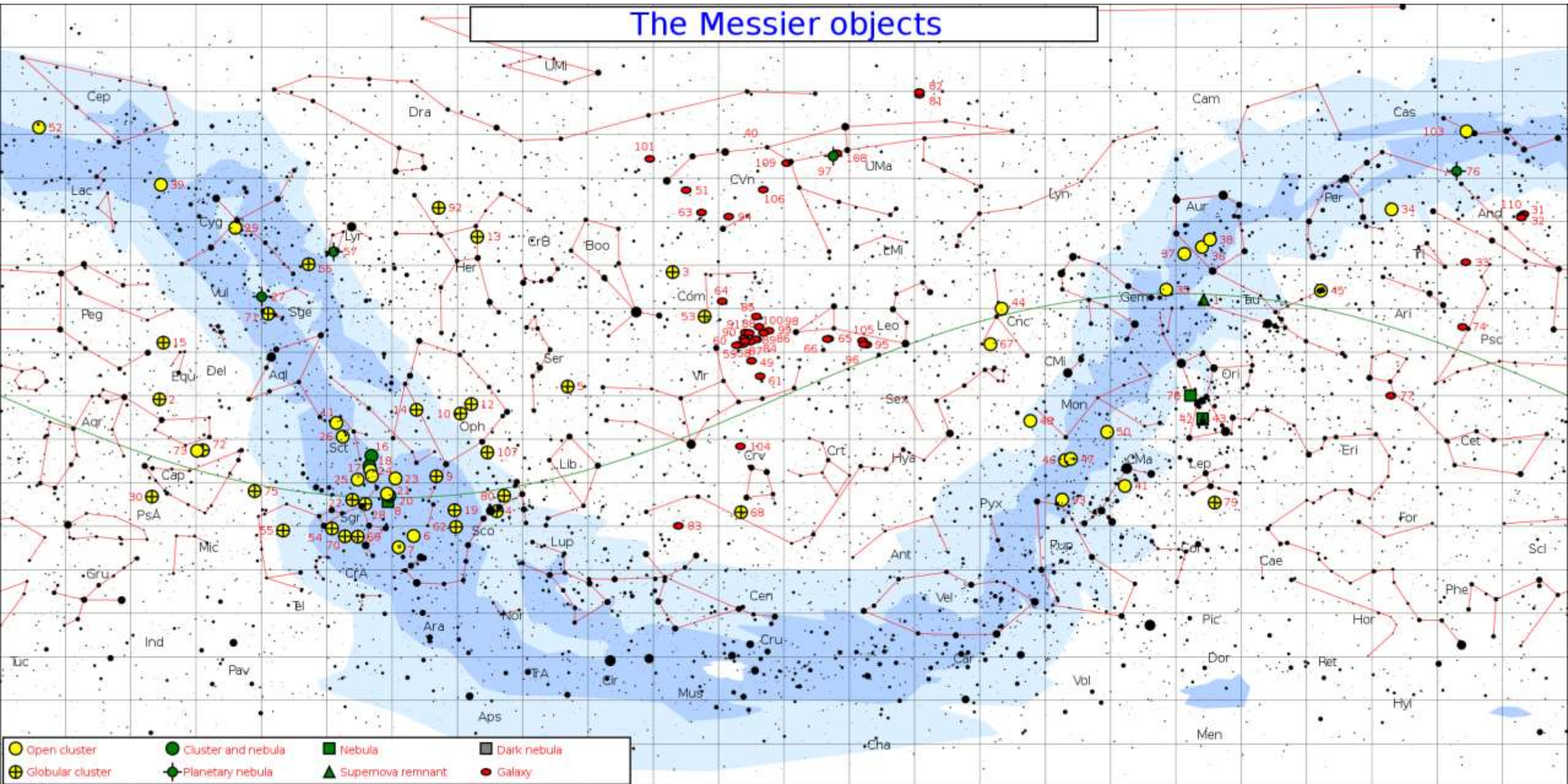
On the night beginning 2003/4/10, observing from location 39 N 9 W, between astronomical twilight ending at 20:40 UT and beginning again at 4:33 UT, the following Messier objects are above the horizon at some time.

M1	M2	M3	M4	M5	M6	M7	M8	M9	M10
M11	M12	M13	M14	M15	M16	M17	M18	M19	M20
M21	M22	M23	M24	M25	M26	M27	M28	M29	M30
M31	M32	M33	M34	M35	M36	M37	M38	M39	M40
M41	M42	M43	M44	M45	M46	M47	M48	M49	M50
M51	M52	M53	M54	M55	M56	M57	M58	M59	M60
M61	M62	M63	M64	M65	M66	M67	M68	M69	M70
M71	M72	M73	- - -	M75	M76	- - -	M78	M79	M80
M81	M82	M83	M84	M85	M86	M87	M88	M89	M90
M91	M92	M93	M94	M95	M96	M97	M98	M99	M100
M101		M103	M104	M105	M106	M107	M108	M109	M110

Total accessible Messier objects: 107

[Try another date or location.](#)

The Messier objects



My Messier Marathon

=====

Date: ____ . ____ 19__ Observer: _____

Location: _____ Lat: _____ Long: _____ Time Zone: _____

Instruments used: _____

General Comments: _____

=====

The Object List:

=====

No.	M#	NGC#	Con	Type	Your#	Time	Comments
1.	M77	1068	Cet	G S	_____	__:__	_____
2.	M74	628	Psc	G S	_____	__:__	_____
3.	M33	598	Tri	G S	_____	__:__	_____
4.	M31	224	And	G S	_____	__:__	_____
5.	M32	221	And	G E	_____	__:__	_____
6.	M110	205	And	G E	_____	__:__	_____
7.	M52	7654	Cas	OC1	_____	__:__	_____
8.	M103	581	Cas	OC1	_____	__:__	_____
9.	M76	650	Per	Pl	_____	__:__	_____
10.	M34	1039	Per	OC1	_____	__:__	_____
11.	M45	-	Tau	OC1	_____	__:__	_____
12.	M79	1904	Lep	Gl	_____	__:__	_____

<http://www.astrosurf.com/re/messier.html>
<http://www.astrosurf.com/re/messform.htm>

```
*****  
*                                     *  
*                                     *  
*   Score: _____ of 110 !!   *  
*                                     *  
*                                     *  
*****
```

Key:

- No. : Don Machholz' sequence number
- M# : Messier number
- NGC# : NGC (or IC) number
- Con : Constellation (abbreviated)
- Type : Object Type (see below)
- Your# : Your actual sequence number
- Time : Your observing time (in your time zone)
- Comments: Any important observing circumstances/results etc.

Types:

- OC1=Open Cluster, Gl=Globular Cluster, Pl=Planetary Nebula,
- DN=Diffuse Nebula, G S=Spiral Galaxy, G E=Elliptical Galaxy,
- G Ir=Irregular Galaxy, GS0=Lenticular (S0) Galaxy, SNR=SNR,
- 2St=Binary Star, 4St=4 Star System

SLAS Messier Marathon Log Sheets

#	Messier	Constellation	Type	Rating	Instrument	Date	Time	Location
19	M36	Auriga	Open Cluster	Moderate				
20	M38	Auriga	Open Cluster	Moderate				
21	M41	Canis Major	Open Cluster	Easy				
22	M93	Puppis	Open Cluster	Moderate				
23	M47	Puppis	Open Cluster	Moderate				
24	M46	Puppis	Open Cluster	Moderate				
25	M50	Monoceros	Open Cluster	Moderate				
26	M48	Hydra	Open Cluster	Moderate				
27	M44	Cancer	Open Cluster	Easy				
28	M67	Cancer	Open Cluster	Moderate				

II. Leo and the Big Dipper Region

29	M95	Leo	Galaxy	Difficult				
30	M96	Leo	Galaxy	Difficult				
31	M105	Leo	Galaxy	Difficult				
32	M65	Leo	Galaxy	Difficult				
33	M66	Leo	Galaxy	Difficult				
34	M81	Ursa Major	Galaxy	Moderate				
35	M82	Ursa Major	Galaxy	Moderate				

SLAS Messier Marathon Log Sheets

#	Messier	Constellation	Type	Rating	Instrument	Date	Time	Location
36	M97	Ursa Major	Planetary Nebula	Difficult				
37	M108	Ursa Major	Galaxy	Difficult				
38	M109	Ursa Major	Galaxy	Difficult				
39	M40	Ursa Major	Double Star	Difficult				
40	M106	Canes Venatici	Galaxy	Moderate				
41	M94	Canes Venatici	Galaxy	Moderate				
42	M63	Canes Venatici	Galaxy	Moderate				
43	M51	Canes Venatici	Galaxy	Moderate				
44	M101	Ursa Major	Galaxy	Moderate				
45	M102	Draco	Galaxy	Difficult				
46	M53	Coma Berenices	Globular Cluster	Moderate				
47	M64	Coma Berenices	Galaxy	Moderate				
48	M3	Canes Venatici	Globular Cluster	Moderate				
49	M68	Hydra	Globular Cluster	Difficult				
50	M83	Hydra	Galaxy	Difficult				

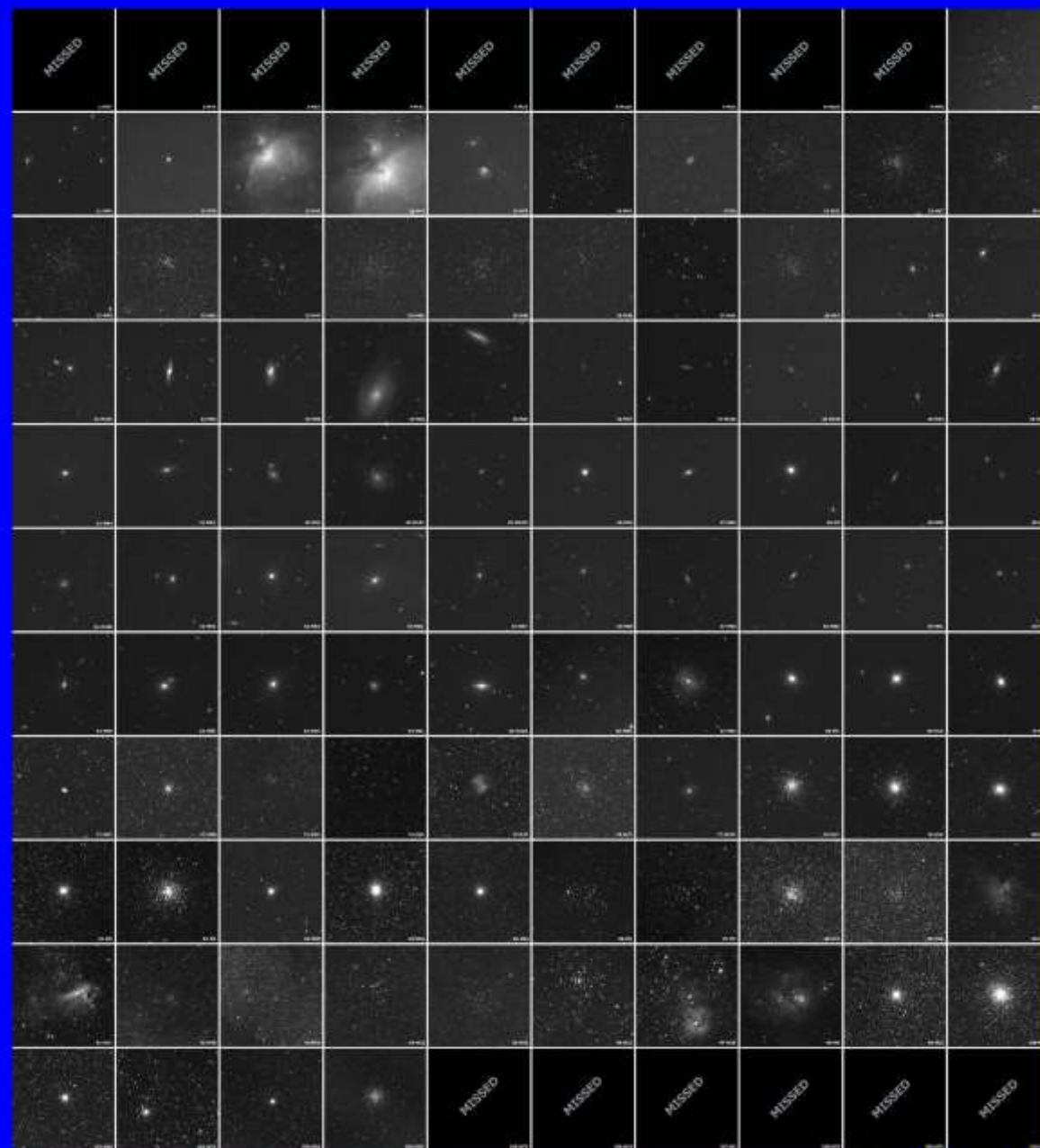
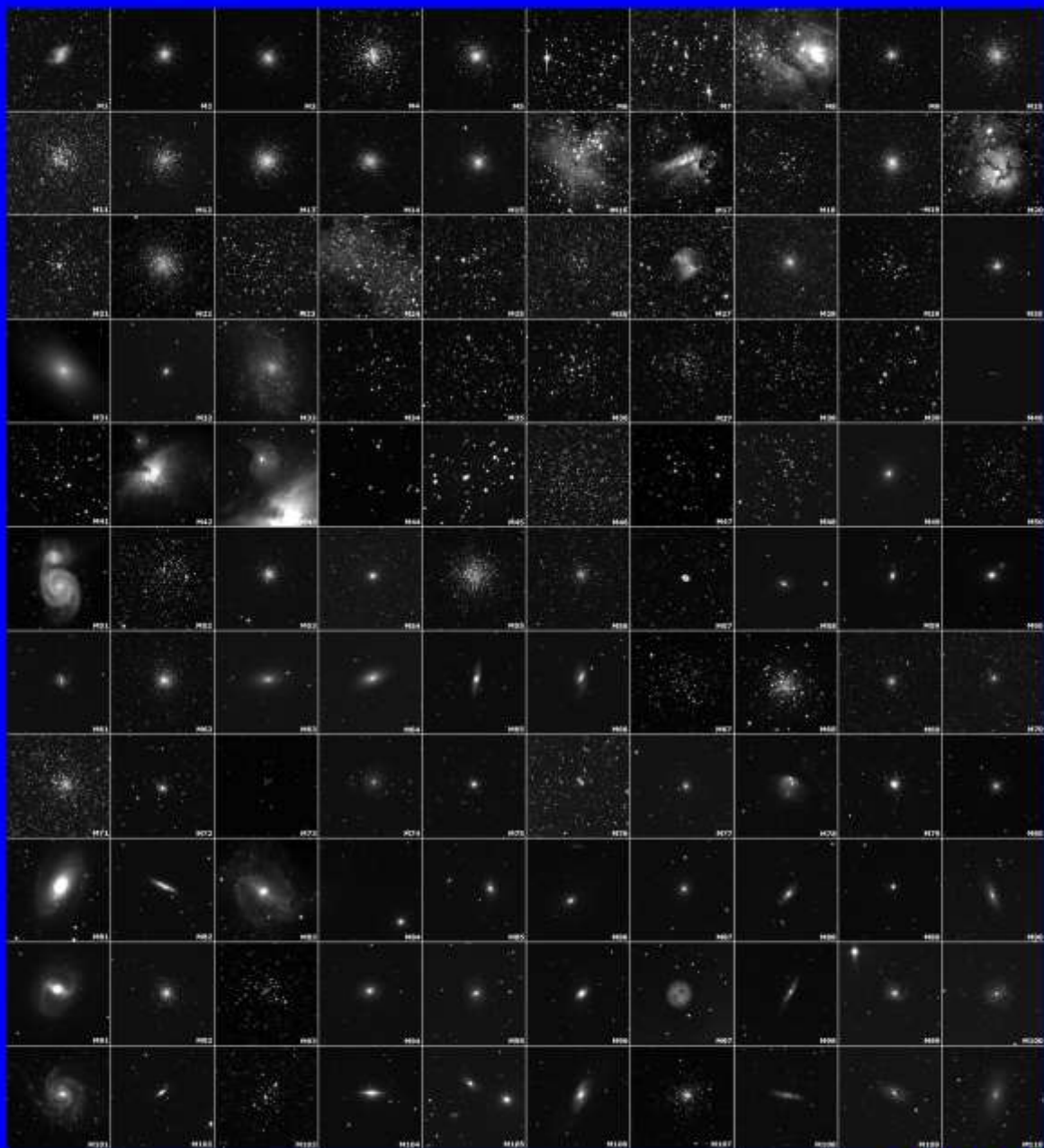
III. Virgo Cluster Region

51	M98	Coma Berenices	Galaxy	Moderate				
52	M99	Coma Berenices	Galaxy	Moderate				

<https://www.yumpu.com/it/document/read/11511575/slas-messier-marathon-log-sheets>

MESSIER CATALOGUE

CCD MESSIER MARATHON



Takahashi FS102 (@F/6)
SBIG ST7E

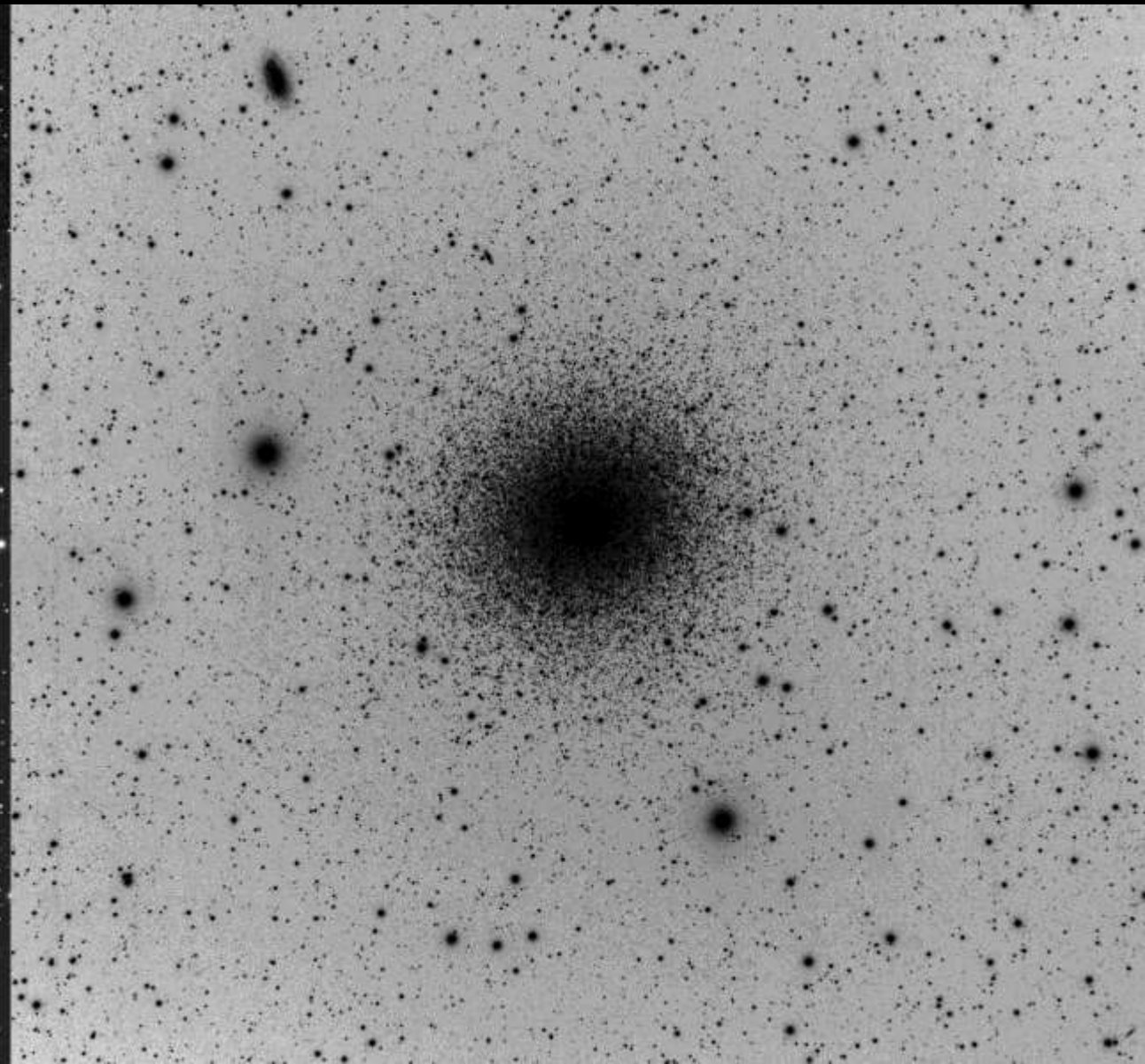
(20040320/21)







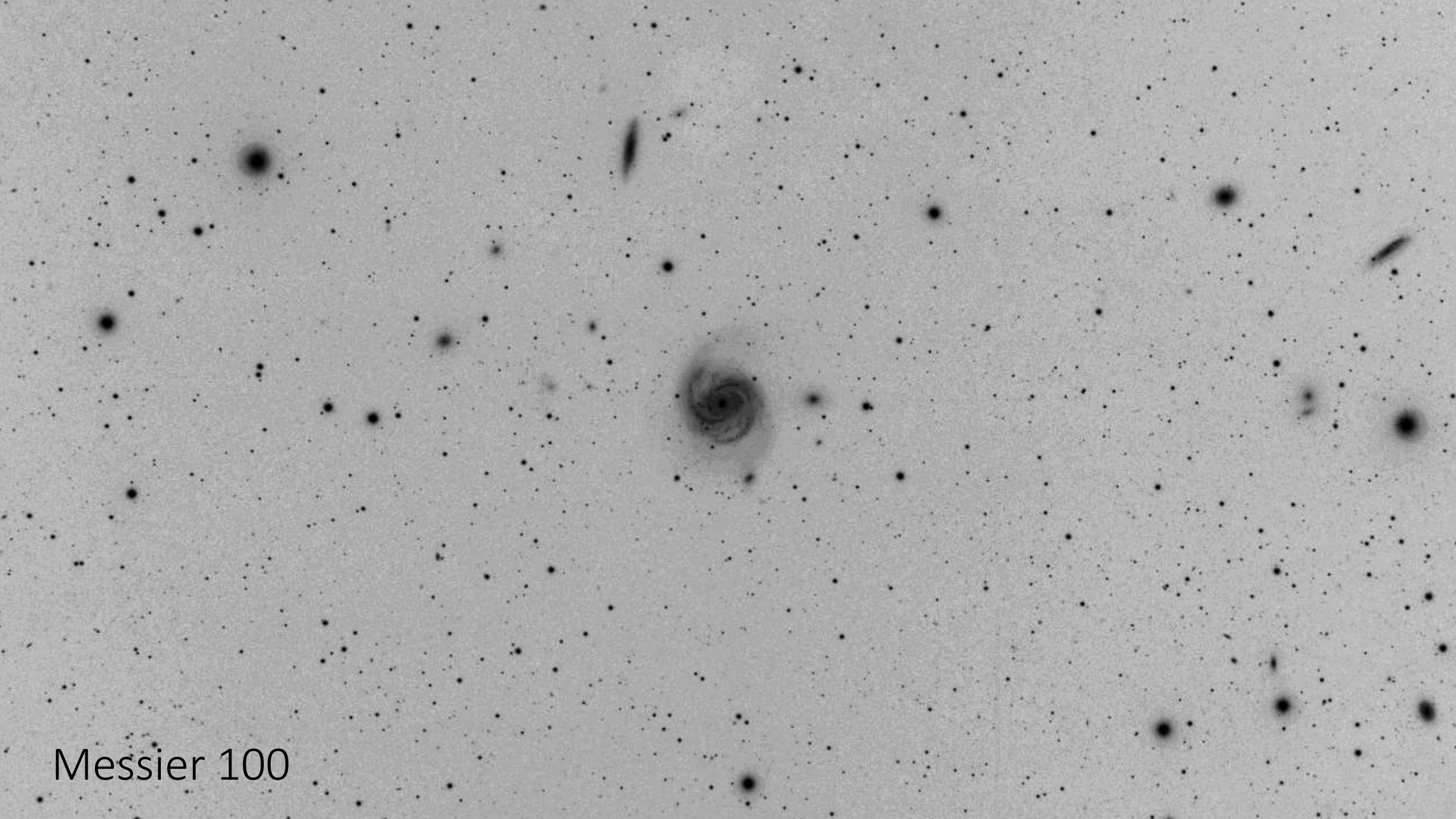
Messier 45



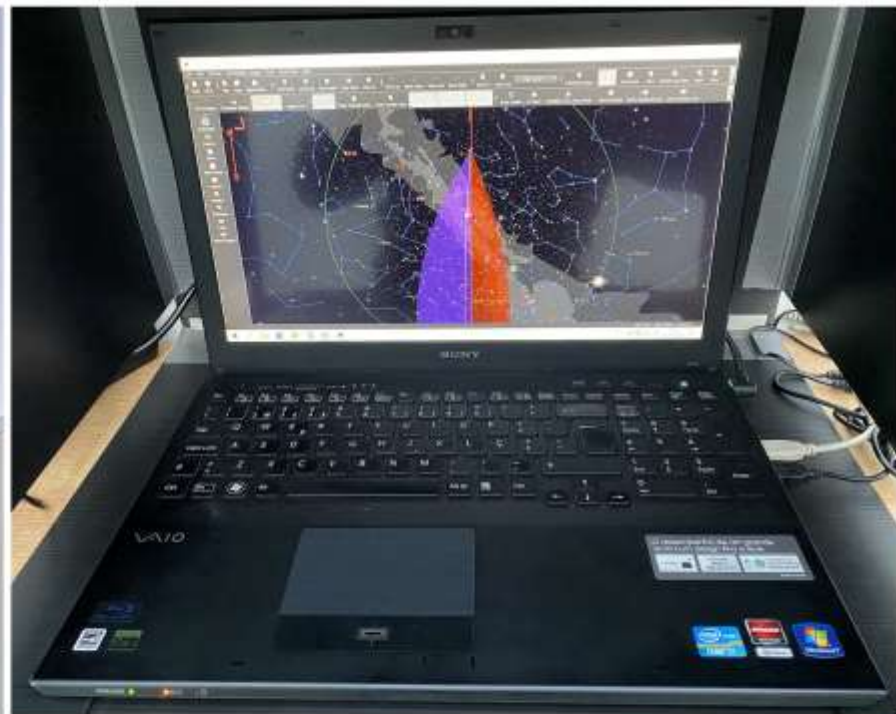
Messier 13

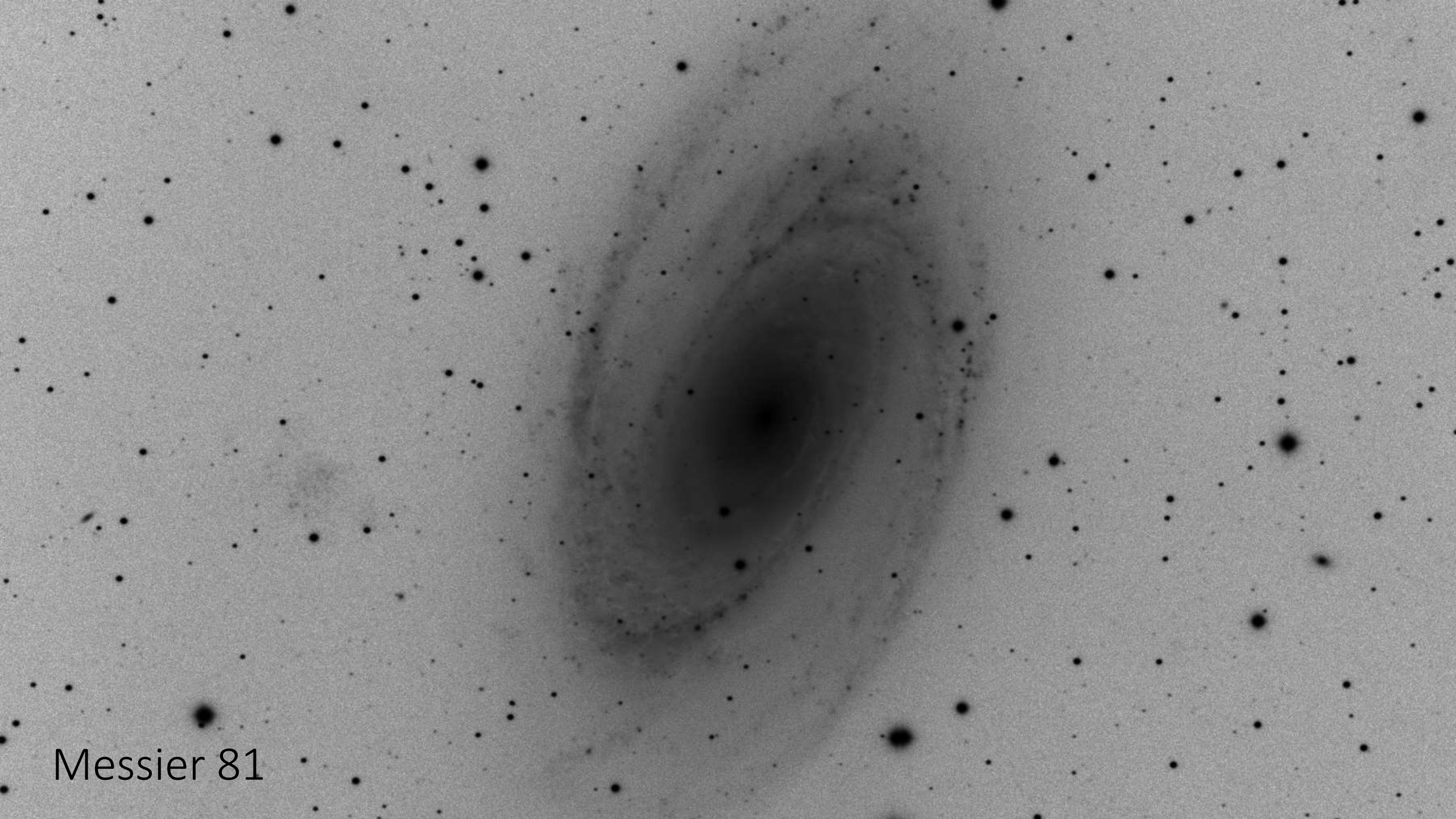


Messier 101

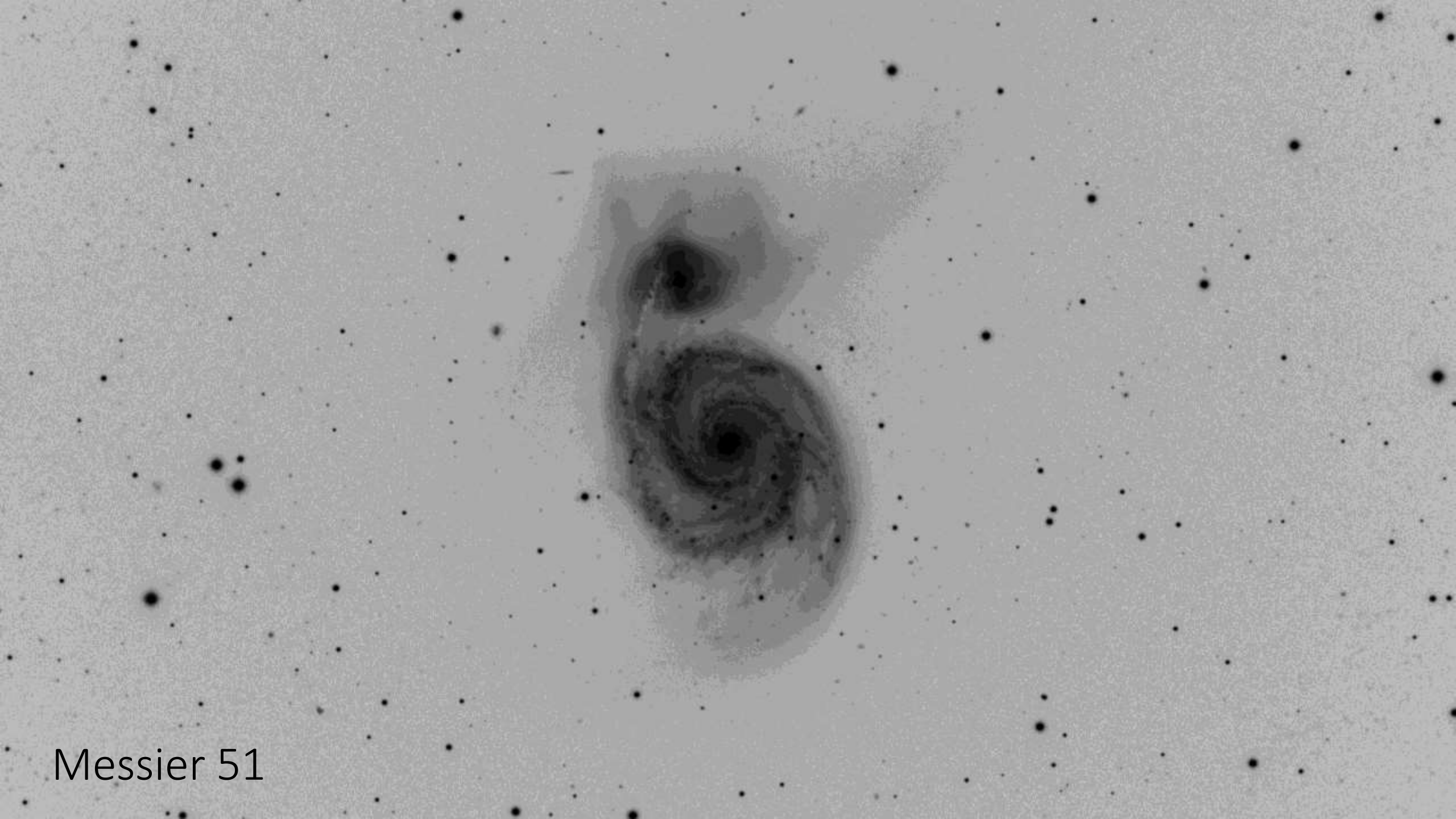


Messier 100

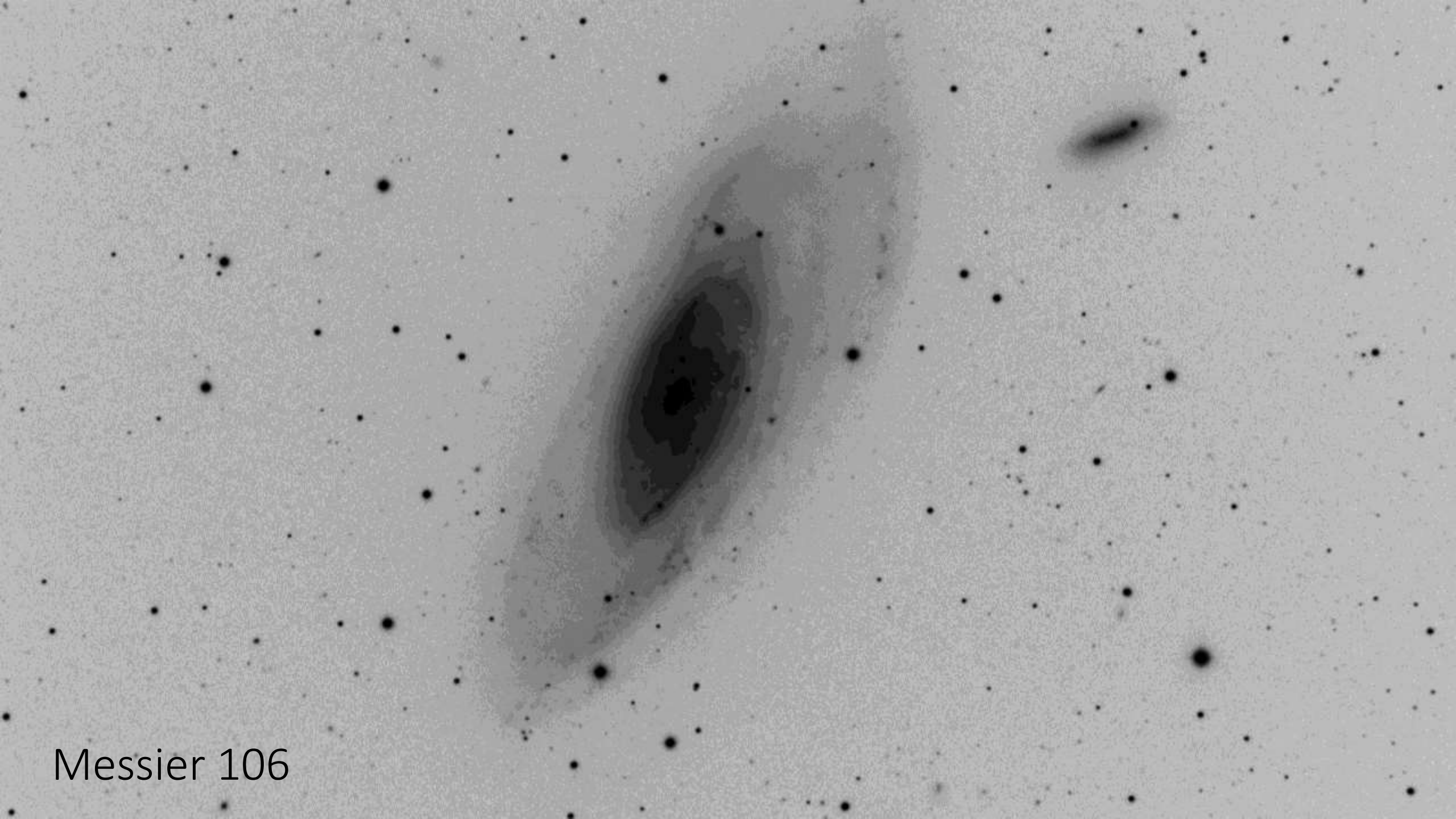




Messier 81



Messier 51



Messier 106